

SPECIFICATIONS:

CAPACITY: 5000 LBS MAX. LIFTING CAPACITY
 2500 LBS MAX. AXLE CAPACITY, ENDS
 2500 LBS MAX. AXLE CAPACITY, SIDES
 10,000 LB ROLLOVER CAPACITY IN FULLY LOWERED POSITION.

PLATFORM: 72" x 96" SAFETY TREAD DECK
 REMOVABLE HANDRAILS
 36" x 66" SPLIT ALUMINUM BRIDGE WITH CHAINS
 BEVEL TOE GUARDS WITH SAFETY STRIPING

SPEED: 12 FEET PER MINUTE UP AND DOWN

TRAVEL: 58" (FROM A 10" LOWERED HEIGHT)

POWER UNIT: 5 HP MOTOR (REMOTE FROM LIFT)
 STANDARD VOLTAGE: 230/60/3
 OPTIONAL VOLTAGES: 460/60/3, 230/60/1

CONTROL: UP-DOWN WEATHERPROOF PUSHBUTTON STATION
 PENDANT TYPE NEMA 4, WITH QUICK DISCONNECT.

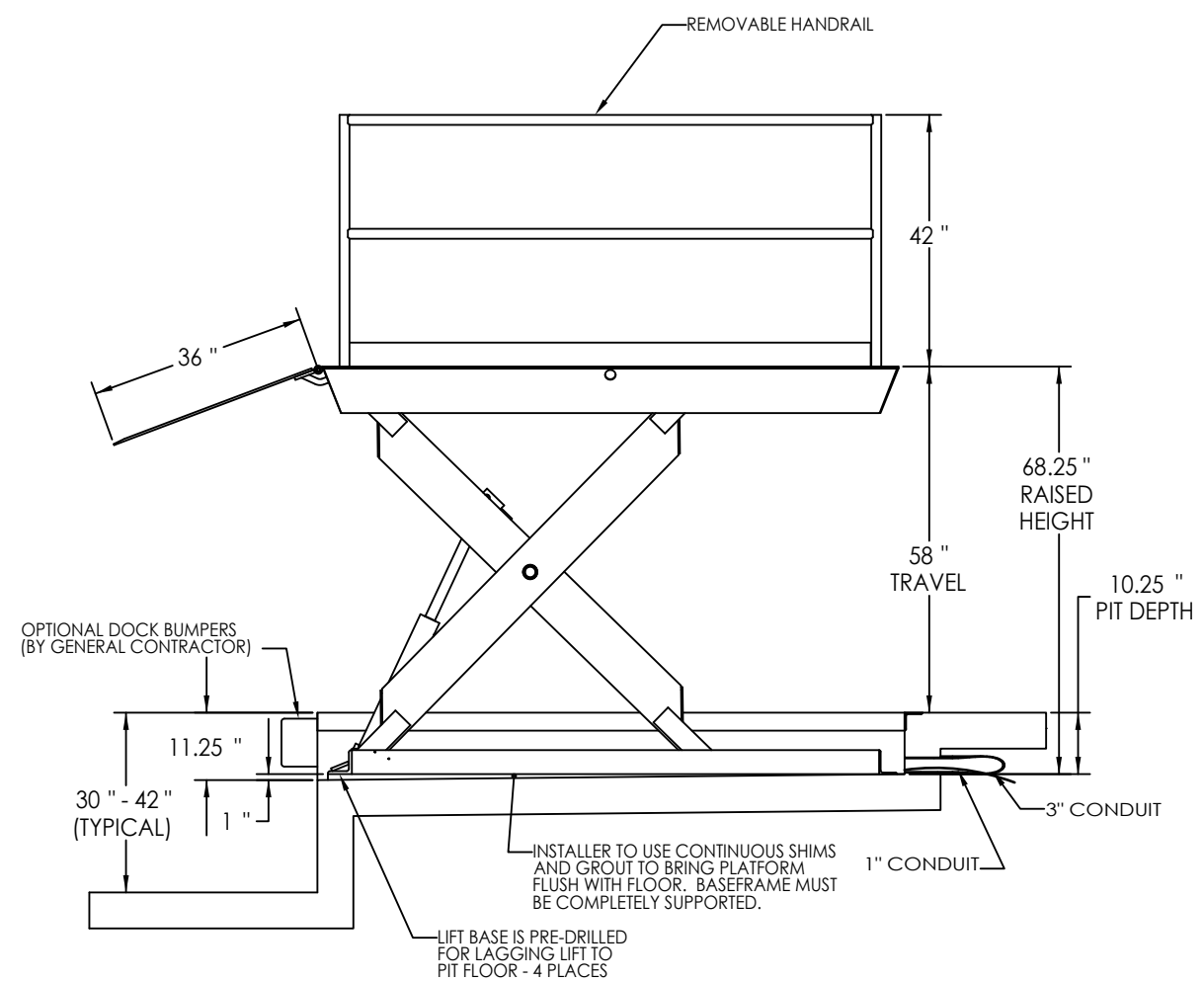
MAGNETIC STARTER, WITH OVERLOAD AND 24 VAC CONTROL TRANSFORMER INSIDE NEMA 12 ENCLOSURE.

GENERAL NOTES:

1. REINFORCE CONCRETE TO SUIT LOCAL SOIL CONDITIONS PLUS YOUR DESIRED SAFETY FACTORS.
2. APPROXIMATE POWER UNIT SIZE: 29.5" WIDE x 15" DEEP x 29.25" HIGH. (INCLUDING MOTOR AND CONTROLLER)
3. CONCRETE WORK, REINFORCING, BUILDING MODIFICATIONS, PIPING, ELECTRICAL WIRING, AND IMBEDDED ITEMS BY GENERAL CONTRACTOR.

SPECIAL PRE-INSTALLATION REQUIREMENTS:

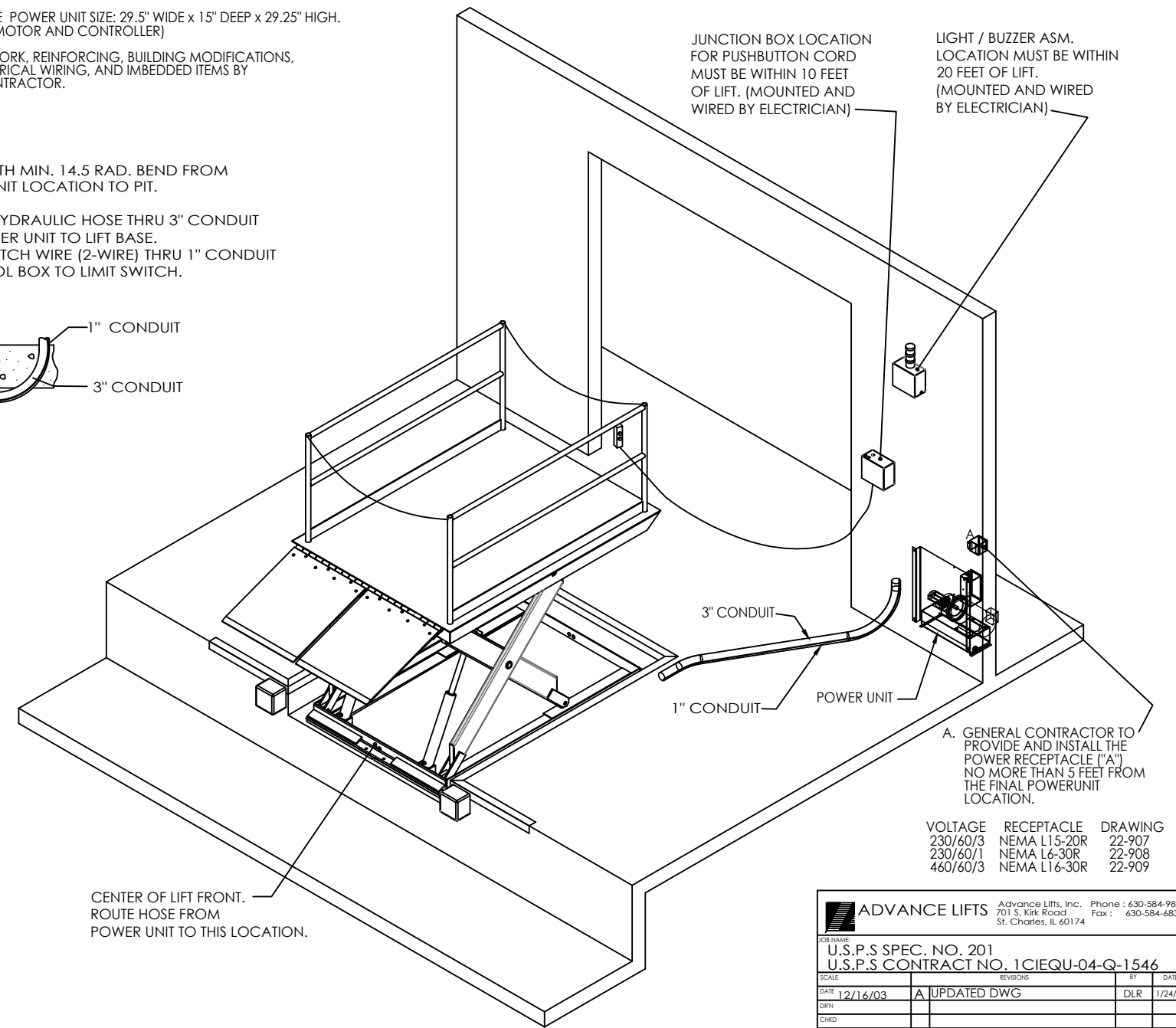
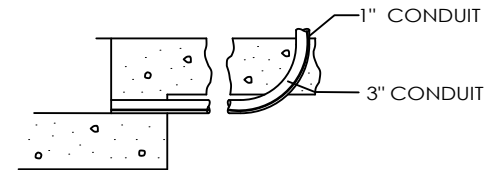
1. THIS DRAWING IS A GENERAL OVERVIEW OF A STANDARD U.S.P.S. INSTALLATION. (FOR REFERENCE PURPOSES ONLY). SHOULD ADDITIONAL DRAWINGS BE REQUIRED, CONTACT ADVANCE LIFTS.
2. ALL 2500K UNITS REQUIRE A SITE SURVEY PRIOR TO RELEASE. NO EXCEPTIONS. IF NEW CONSTRUCTION, THE PIT MUST BE COMPLETED BEFORE A SITE SURVEY WILL TAKE PLACE.
3. SITES FOUND TO HAVE MAJOR DEFECTS OR SAFETY ISSUES WILL REQUIRE CORRECTIONS AND A SECOND SITE SURVEY AT ADDITIONAL EXPENSE.
4. LIFTS ARE SHIPPED TO SITE WHEN THE FOLLOWING CONDITIONS ARE MET:
 - A. PERMANENT ELECTRICAL RECEPTACLES, WIRING AND PROPER VOLTAGE/PHASE FOR THE DOCK LIFT, PUSHBUTTON AND WARNING BELL/ FLASHING LIGHT MUST BE COMPLETE AND LOCATED CORRECTLY.
 - B. CONCRETE PIT MUST BE COMPLETE WITH THE PIPE CHASE AND ELECTRICAL CONDUITS INSTALLED.
 - C. SITE MUST BE ACCESSIBLE FOR DELIVERY AND INSTALLATION OF EQUIPMENT. LIFTS WILL NOT BE DELIVERED TO SITES WITH UNFINISHED APPROACHES.
5. IF ANY OF THE ABOVE REQUIREMENTS ARE NOT FOLLOWED, AND ADDITIONAL TRIPS TO SITE ARE REQUIRED, THE PURCHASER AGREES TO PAY ADDITIONAL CHARGES BEYOND THE CONTRACTED AMOUNT FOR THE LIFT.



RUN 3" CONDUIT WITH MIN. 14.5 RAD. BEND FROM POWER UNIT LOCATION TO PIT.

INSTALLER TO RUN 1/2" HYDRAULIC HOSE THRU 3" CONDUIT FROM POWER UNIT TO LIFT BASE.

INSTALLER TO RUN LIMIT SWITCH WIRE (2-WIRE) THRU 1" CONDUIT FROM CONTROL BOX TO LIMIT SWITCH.



A. GENERAL CONTRACTOR TO PROVIDE AND INSTALL THE POWER RECEPTACLE ("A") NO MORE THAN 5 FEET FROM THE FINAL POWER UNIT LOCATION.

VOLTAGE	RECEPTACLE	DRAWING
230/60/3	NEMA L15-20R	22-907
230/60/1	NEMA L6-30R	22-908
460/60/3	NEMA L16-30R	22-909

ADVANCE LIFTS Advance Lifts, Inc. Phone : 630-584-9881
 701 S. Kirk Road Fax: 630-584-6837
 St. Charles, IL 60174

U.S.P.S SPEC. NO. 201
 U.S.P.S CONTRACT NO. 1CIEQU-04-Q-1546

SCALE	REVISIONS	BY	DATE
DATE 12/16/03	A	UPDATED DWG	DLR 1/24/20
DRN			
CHKD			
DESC:	2500K INSTALLATION SPECIFICATIONS		
DWG:	USPS-201	REV:	A

CENTER OF LIFT FRONT. ROUTE HOSE FROM POWER UNIT TO THIS LOCATION.