

ADVANCE



DUMPPERS

Maximum
VALUE through
Superior
SERVICE

W H Y B U Y A D V A N C E

Advance offers you 36 models of dumpers to choose from. Capacities range from 2000 pounds to 6000 pounds. Dump heights are available at 36 inches, 48 inches and 60 inches. Carriage sizes are 40" x 36", 40" x 48", 52" x 36" and 52" x 48". Also, Advance can customize a dumper to meet your needs.

D U M P E R S



Shown without front cover panel

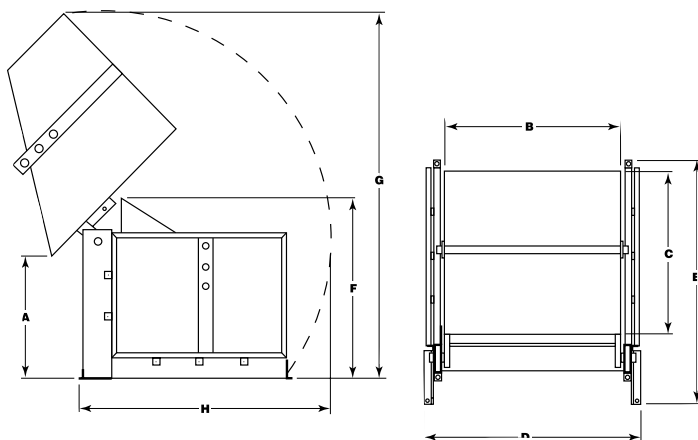
◆ **Mechanical** Advance dumpers come equipped with adjustable deflectors to direct the product flow as it is dumped. All pivot points are equipped with Teflon impregnated lifetime lubricated bearings that never need to be greased or oiled, which reduce maintenance costs and prolong equipment life. All axles and pins are made from hard chrome plated 100,000 psi stressproof steel to ensure maximum safety and prolonged equipment life.

◆ **Paint Finish** All Advance dumpers go through a multi-step paint process ending with an oven baked-on primer and oven baked-on hard enamel paint finish to ensure long equipment life rather than using outdated air dry methods that take 30 to 60 days to cure. Advance provides the best paint finish in the industry. Advance is also able to provide you with optional FDA and USDA approved epoxy paint coatings or stainless steel carriages. (Contact your sales representative for more information.)

◆ **Hydraulic** Advance manufactures its own industrial grade hydraulic cylinders with front bearing blocks equipped with Teflon impregnated, sintered bronze, steel backed, lifetime lubricated bearings, pistons equipped with nylon glass filled wear rings, cylinder rods made from high strength stressproof steel that is hard chrome plated, cylinder housings that are automatically welded with specially designed mechanical lathe welders and spud welders rather than providing inexpensive agricultural grade hydraulic cylinders without many of the above features.

◆ **Electrical** Advance is a UL approved electrical enclosure assembler. Every dumper you buy from Advance comes with an electrical controller box that is UL approved with the UL label. Other manufacturers would have to charge hundreds of dollars for this feature. With Advance, this added safety feature is free.

DUMPERS



Optional Accessories Single phase (230/60/1 or 115/60/1) (Single phase operation increases the time it takes to dump by approximately 2.5 times.)

Model Number	(A) Dump Height (In.)	Capacity (Lbs.)	(B x C) Carriage Dimensions W x L (In.)	Motor H.P.	Speed Seconds	(D x E) Overall Dimensions W x L (In.)	(F) Carriage Height (In.)	(G) Arc Height (In.)	(H) Arc Width (In.)	Shipping Weight (Lbs.)
--------------	-----------------------	-----------------	---	------------	---------------	--	---------------------------	----------------------	---------------------	------------------------

2,000 Lb. Capacity • 36" Dump Height

DP-236-4036	36	2000	40 x 36	2	19	52-1/2 x 56	53	99	70	1010
DP-236-4048	36	2000	40 x 48	2	19	52-1/2 x 68	53	108	79	1045
DP-236-5236	36	2000	52 x 36	2	19	64-1/2 x 56	53	99	70	1040
DP-236-5248	36	2000	52 x 48	2	19	64-1/2 x 68	53	108	79	1085

2,000 Lb. Capacity • 48" Dump Height

DP-248-4036	48	2000	40 x 36	2	25	52-1/2 x 57-1/8	65	120	79	1020
DP-248-4048	48	2000	40 x 48	2	25	52-1/2 x 69-1/8	65	128	87	1055
DP-248-5236	48	2000	52 x 36	2	25	64-1/2 x 57-1/8	65	120	79	1050
DP-248-5248	48	2000	52 x 48	2	25	64-1/2 x 69-1/8	65	128	87	1095

2,000 Lb. Capacity • 60" Dump Height

DP-260-4036	60	2000	40 x 36	2	33	52-1/2 x 57-1/8	77	140	79	1030
DP-260-4048	60	2000	40 x 48	2	33	52-1/2 x 69-1/8	77	149	87	1065
DP-260-5236	60	2000	52 x 36	2	33	64-1/2 x 57-1/8	77	140	79	1060
DP-260-5248	60	2000	52 x 48	2	33	64-1/2 x 69-1/8	77	149	87	1105

4,000 Lb. Capacity • 36" Dump Height

DP-436-4036	36	4000	40 x 36	2	37	52-1/2 x 57-1/8	53	99	70	1040
DP-436-4048	36	4000	40 x 48	2	37	52-1/2 x 69-1/8	53	108	79	1075
DP-436-5236	36	4000	52 x 36	2	37	64-1/2 x 57-1/8	53	99	70	1070
DP-436-5248	36	4000	52 x 48	2	37	64-1/2 x 69-1/8	53	108	79	1115

4,000 Lb. Capacity • 48" Dump Height

DP-448-4036	48	4000	40 x 36	2	53	52-1/2 x 57-1/8	65	120	79	1050
DP-448-4048	48	4000	40 x 48	2	53	52-1/2 x 69-1/8	65	128	87	1085
DP-448-5236	48	4000	52 x 36	2	53	64-1/2 x 57-1/8	65	120	79	1080
DP-448-5248	48	4000	52 x 48	2	53	64-1/2 x 69-1/8	65	128	87	1125

4,000 Lb. Capacity • 60" Dump Height

DP-460-4036	60	4000	40 x 36	2	66	52-1/2 x 57-1/8	77	140	89	1060
DP-460-4048	60	4000	40 x 48	2	66	52-1/2 x 69-1/8	77	149	96	1095
DP-460-5236	60	4000	52 x 36	2	66	64-1/2 x 57-1/8	77	140	89	1090
DP-460-5248	60	4000	52 x 48	2	66	64-1/2 x 69-1/8	77	149	96	1135

6,000 Lb. Capacity • 36" Dump Height

DP-636-4036	36	6000	40 x 36	2	37	52-1/2 x 57-1/8	53	99	70	1070
DP-636-4048	36	6000	40 x 48	2	37	52-1/2 x 69-1/8	53	108	79	1105
DP-636-5236	36	6000	52 x 36	2	37	64-1/2 x 57-1/8	53	99	70	1100
DP-636-5248	36	6000	52 x 48	2	37	64-1/2 x 69-1/8	53	108	79	1145

6,000 Lb. Capacity • 48" Dump Height

DP-648-4036	48	6000	40 x 36	2	53	52-1/2 x 57-1/8	77	120	79	1080
DP-648-4048	48	6000	40 x 48	2	53	52-1/2 x 69-1/8	77	128	87	1115
DP-648-5236	48	6000	52 x 36	2	53	64-1/2 x 57-1/8	77	120	79	1110
DP-648-5248	48	6000	52 x 48	2	53	64-1/2 x 69-1/8	77	128	87	1155

6,000 Lb. Capacity • 60" Dump Height

DP-660-4036	60	6000	40 x 36	2	66	52-1/2 x 56	77	140	89	1090
DP-660-4048	60	6000	40 x 48	2	66	52-1/2 x 68	77	149	96	1125
DP-660-5236	60	6000	52 x 36	2	66	64-1/2 x 56	77	140	89	1120
DP-660-5248	60	6000	52 x 48	2	66	64-1/2 x 68	77	149	96	1165

2,000 lb. capacity dumper lets you dump up to 36" high containers, bins, and boxes at a 36" dump height. All you do is roll the load into the dumper carriage, set the 3-position adjustable load restraint bar and press a button.

48" dump height is no problem for these industrial dumpers because they're designed for smooth operation, with their 2 horsepower electric hydraulic power units and convenient push button controls.

Dumping parts and materials at higher heights is not a problem with these 2,000 lb. capacity dumpers that let you dump at 5 feet. Even at this dump height you have complete, smooth control over the dumping operation.

With a 4,000 lb. capacity and 36" dump height these dumpers can handle the heavier loads you must deal with. These heavy duty industrial dumpers rotate 135 degrees to facilitate dumping of just about any material.

A 4,000 lb. load is no challenge for these rugged industrial dumpers. They can handle all types of containers ranging from 36" x 36" up to 48" x 48".

The convenience of dumping 2 tons at 60" becomes readily apparent when you use these reliable industrial dumpers. You just load the carriage, position the load restraint bar and press the control button.

When you've got to dump really heavy parts or materials, these 6,000 lb. capacity dumpers are the units of choice because they make light work out of heavy loads. You can rotate up to 135 degrees and stop at any point.

A 3-ton load is a lot of weight, but these 6,000 lb. dumpers can dump it in about half a minute. The convenient ground entry carriage makes these dumpers easy to load and operate.

6,000 lb. capacity, 60" dump height dumpers safely improve productivity because they turn a labor intensive chore into a simple automated job. When you need to dump materials, these rugged dumpers are your best choice.

A B O U T A D V A N C E

Since Advance began operations in 1974, our prime goal has been to satisfy you, our customer. In 1992, we instituted an ongoing Customer Satisfaction Survey which shows over 75% of our customers consistently rate Advance equipment excellent or above average. To maintain and improve upon this high customer acceptance, we try to make it as easy as possible for you to do business with us.



WE ALSO OFFER:

WORK POSITIONERS

- Hydraulic & Air Powered Lift, Turn & Tilt Tables
- Portable Tables
- Low Profile Tables
- Up-Enders
- Dumpers
- Carousels & Order Picking Lifts
- Mezzanine Lifts
- Coil & Roll Handling Equipment
- Custom Lifts
- Straddle Stackers

LOADING DOCK LIFTS

- Portable Dock Lifts
- Top-Of-Ground Dock Lifts
- Pit Mounted Dock Lifts
- Truck Levelers
- Rail Transfer Bridges

RECYCLING EQUIPMENT

- Portable Box Balers
- Industrial Box Balers
- Drum Crushers
- In-Drum Crushers
- Pallet Munchers

MAINTENANCE EQUIPMENT

- Scissors Lifts
- Mast Lifts

PACKAGING EQUIPMENT

- Manual Stretch Wrappers
- Semi Automatic Stretch Wrappers



To receive more information on these products or to order a catalog call **800-843-3625**.



701 Kirk Road, St. Charles, IL 60174
1-800-843-3625
fax 630-584-9405
www.advancelifts.com